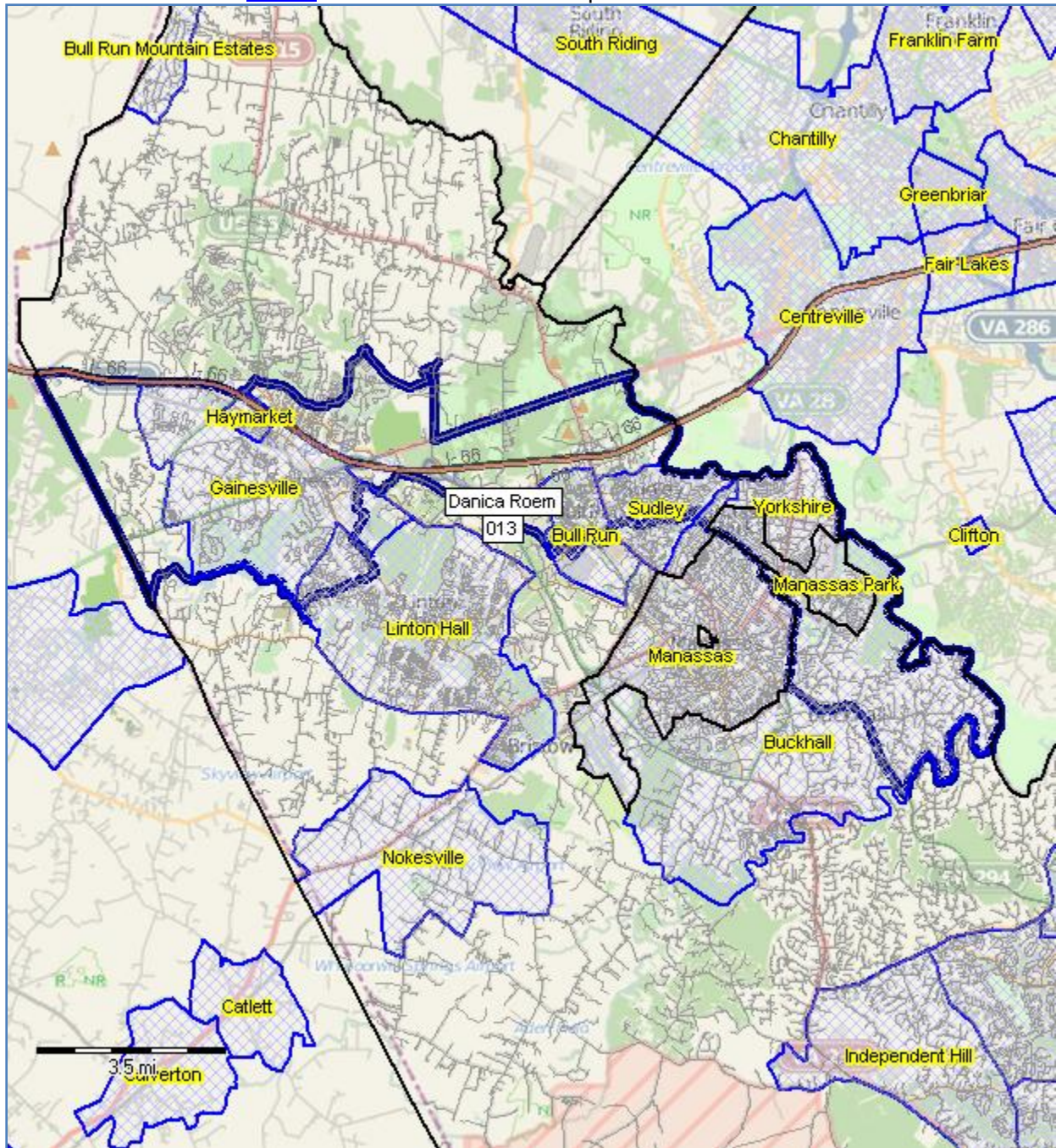


Virginia House Legislative District 13 Geographic-Demographic-Economic Characteristics

Virginia House Legislative District 13 - bold blue boundary
[Places](#) - blue boundaries with place name as label



an illustrative guide to state legislative district analytics

prepared by [Warren Glimpse](#) 01/05/18

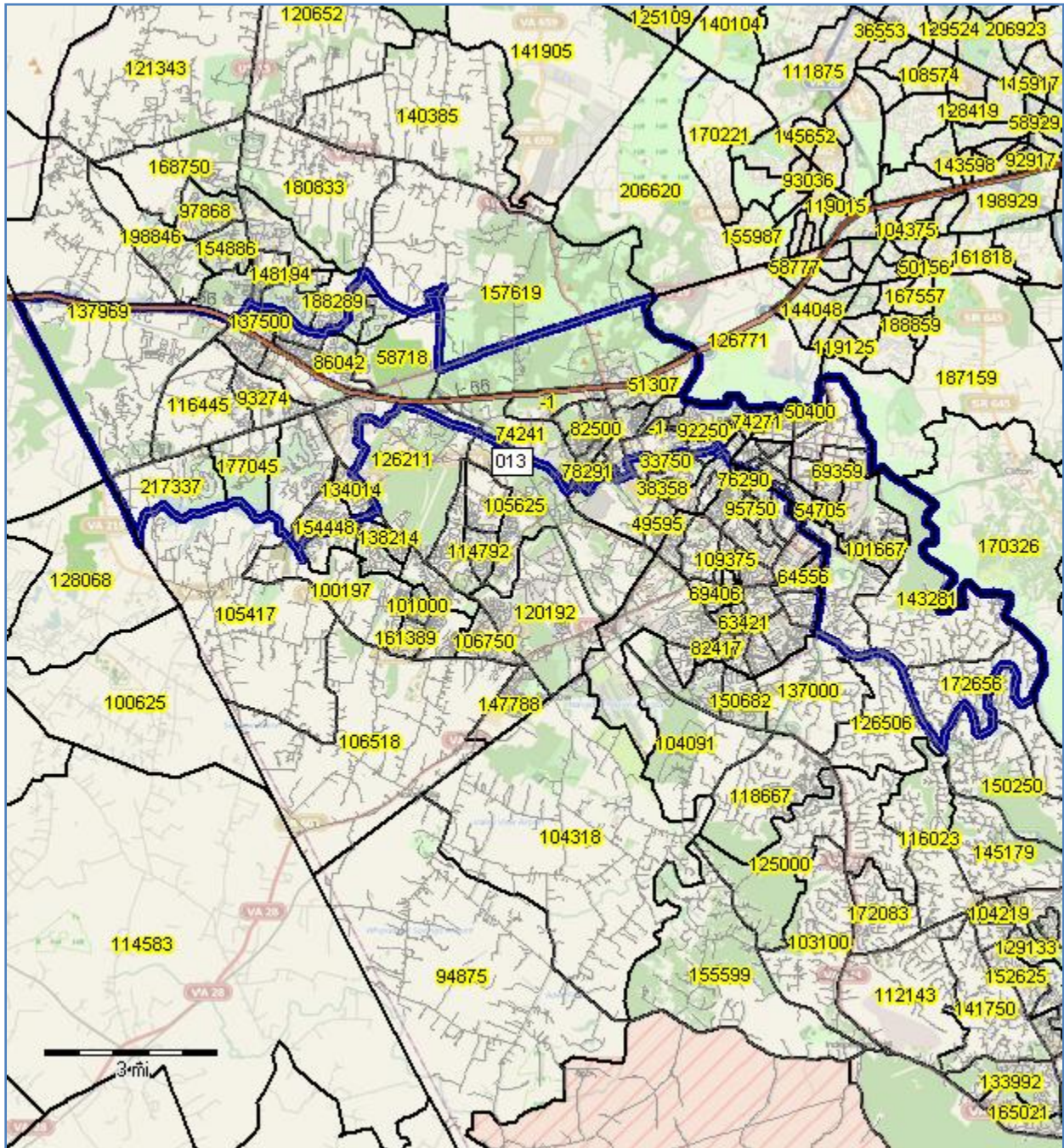
[Join us ... Congressional District/State Legislative District Group](#)

[about the Voting Population](#)

Virginia House District 13 --Geographic-Demographic-Economic Characteristics - 2

House District 13 - bold blue boundary

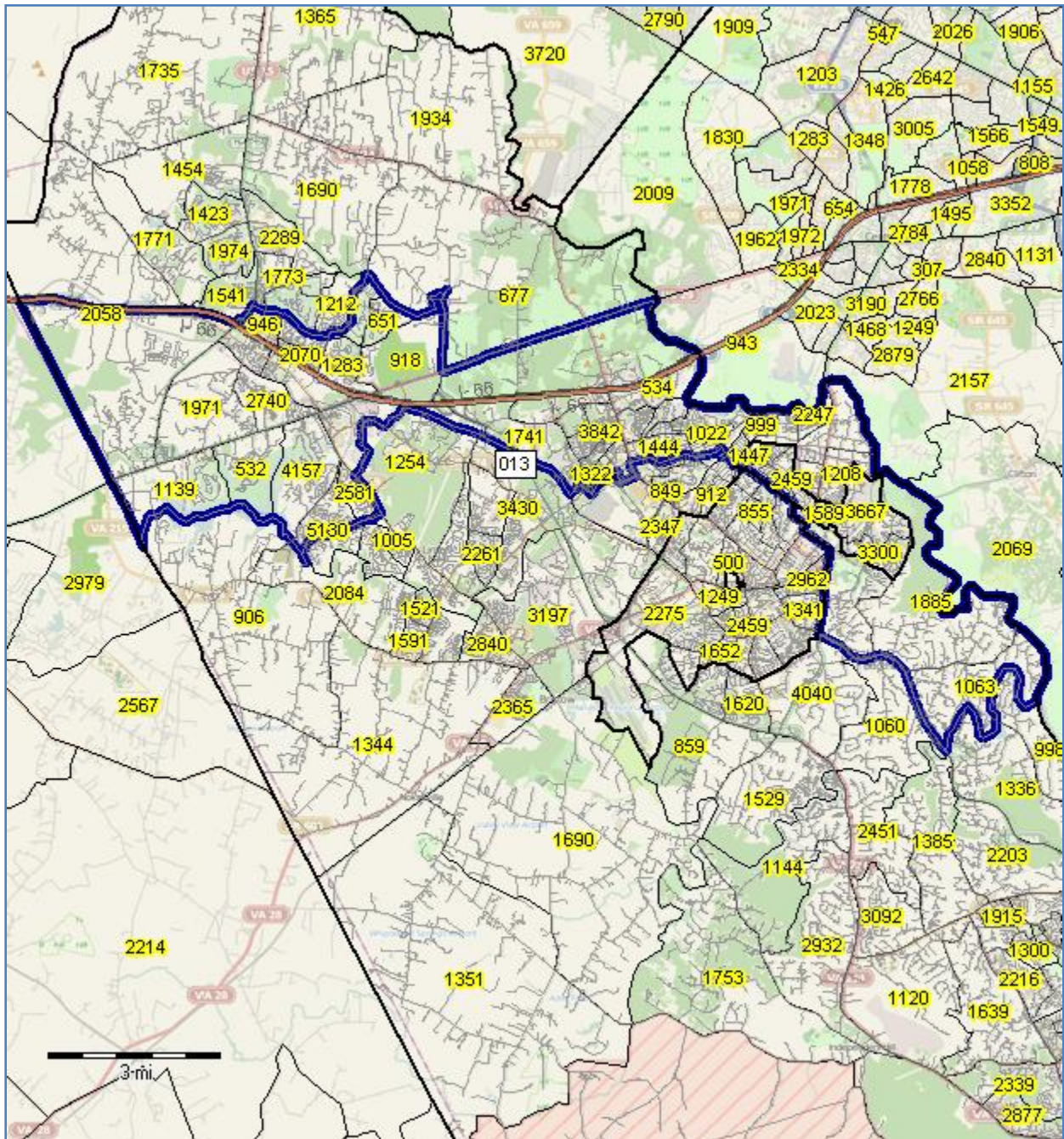
.. Median Household Income (Labels) by Block Group .. [about block groups](#)



Virginia House District 13 --Geographic-Demographic-Economic Characteristics - 3

House District 13 - bold blue boundary

.. Total Population (Labels) by Block Group .. [about block groups](#)



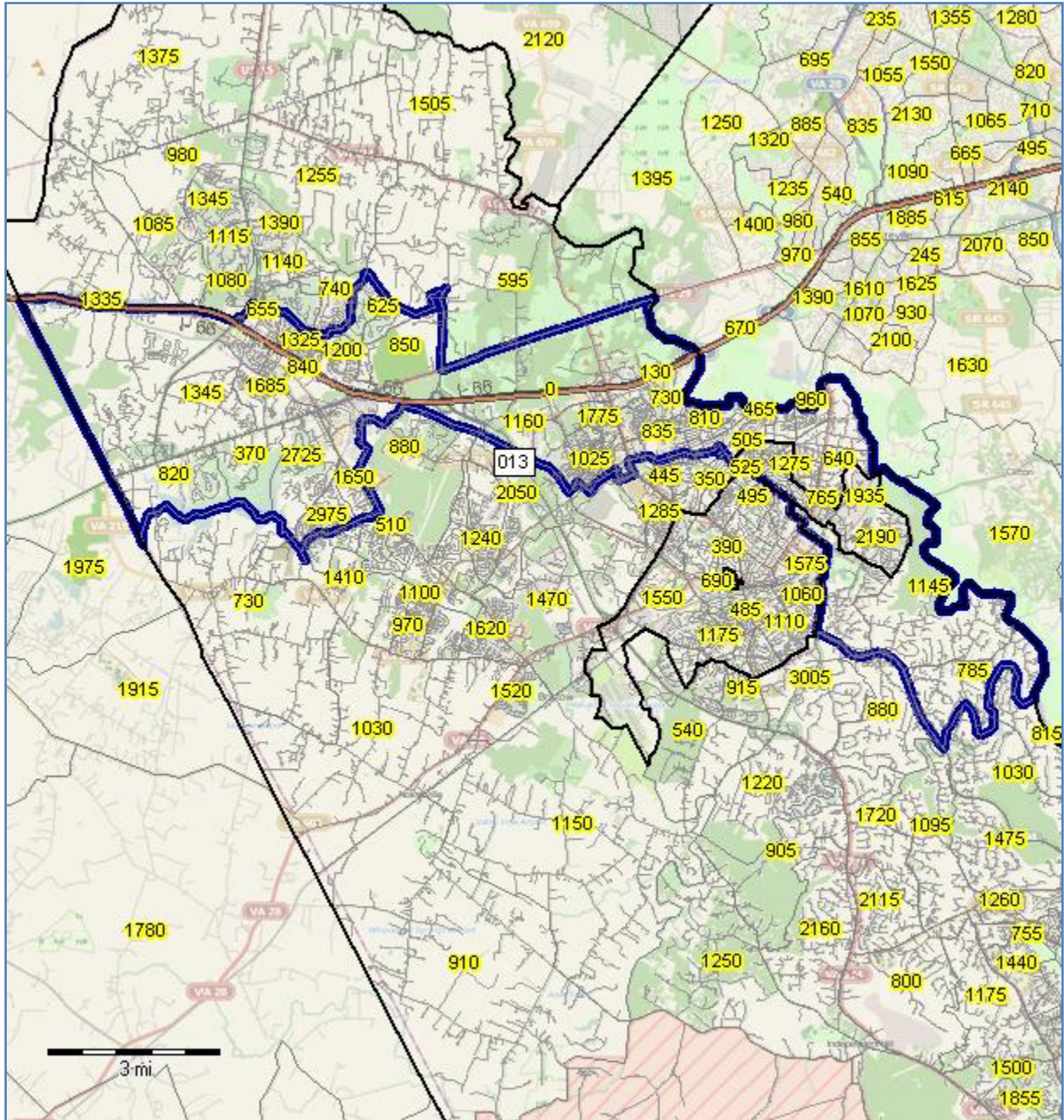
Virginia House District 13 --Geographic-Demographic-Economic Characteristics - 4

House District 53 - bold blue boundary

.. Citizen Voting Age Population (CVAP - Labels) by Block Group

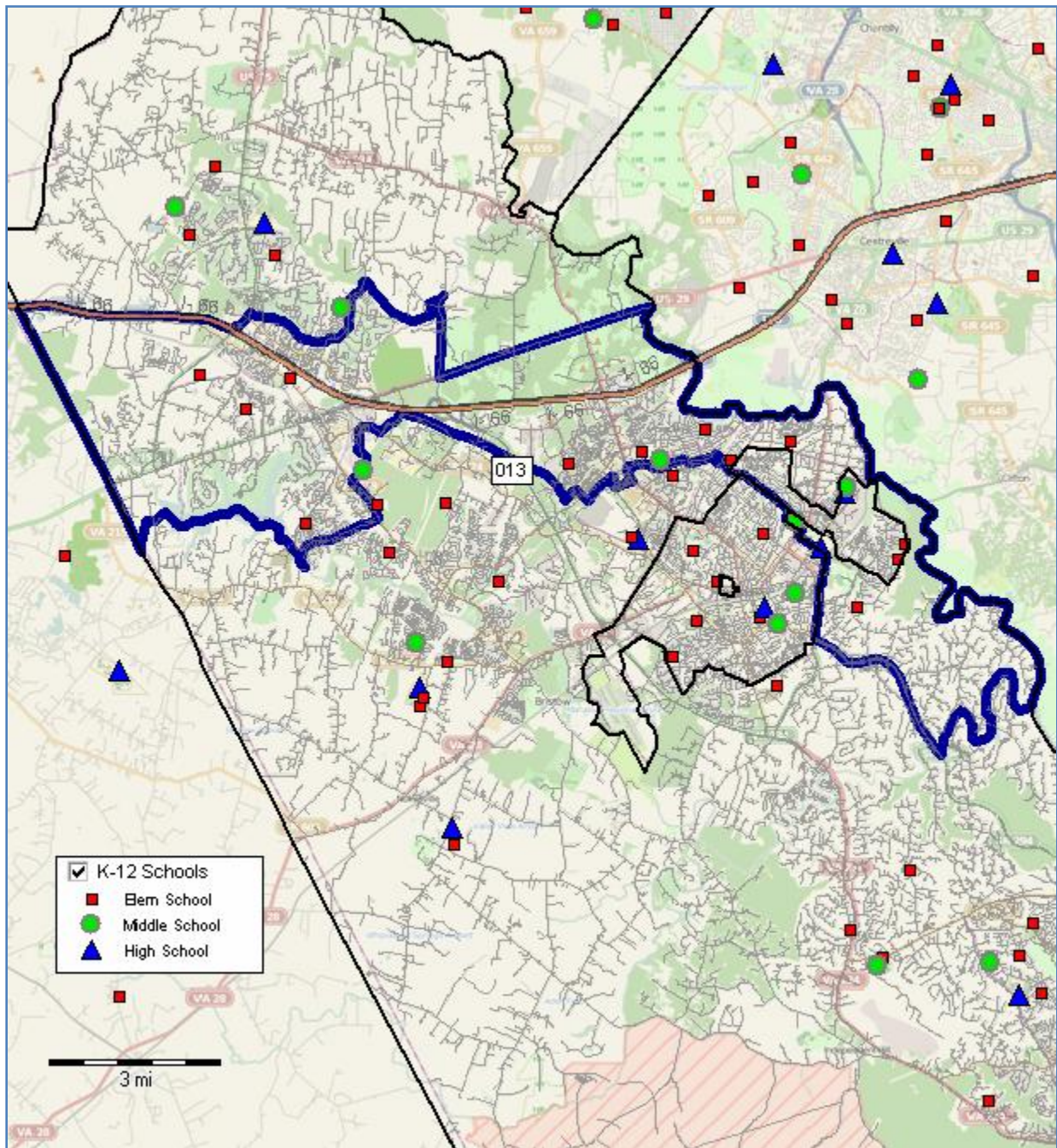
.. about [block groups](#)

.. about [Citizen Voting Age Population](#)



Patterns of Economic Prosperity by Neighborhood

K-12 Schools by School Level
-- see inset legend, lower left



About this Document

This document was prepared using the ProximityOne [CV XE GIS software](#) and related [Virginia GIS CD/SLD project](#). Develop similar views for any area in the U.S.

See this report as a PDF at <http://proximityone.com/cdsld/vasldh013.pdf>.

Using this Document

This document presents illustrative maps focused on a state legislative district intended for orientation and visual data analytics about related geography and geodemographics.

Map 1 (cover) shows the district boundary in context of related topography.

Map 2 median household income (as labels) by block group.

... block groups are important as they are the smallest geography for which demographic-economic data are annually updated.

Map 3 total population (as labels) by block group.

... block groups are important as they are the smallest geography

Map 4 citizen voting age population (CVAP -- as labels) by block group.

... compare the CVAP population in this map to the total population in Map 4

... using GIS tools, patterns of the ratio CVAP/total population could be viewed/analyzed

... add registered voters as markers or aggregates by BG to enhance the analytical power.

Map 5 patterns of economic prosperity and educational attainment by neighborhood.

... "know" the residents; "know" what might be primary concerns and needs.

... HS educational attainment (labels) by census tract.

... thematic pattern view of median household income by census tract.

Map 6 K-12 Schools.

Use dynamic GIS applications to drill-down to sub-areas and apply queries.

Related links:

- About [State Legislative Districts](#) -- with demographic-economic interactive table.
- [Virginia State Legislative Districts](#) -- with incumbency/party demographic-economic table.
- Join in -- [Congressional District/State Legislative District Data Analytics Sessions](#).

About Warren Glimpse

Warren Glimpse is an econometrician and former Census Bureau official. Glimpse developed the Columbia, MO GBF/DIME file which was used as the prototype for the Census Bureau [TIGER/Line](#) program. While with the Census Bureau he was responsible for Census Bureau data access and user services programs. Glimpse established the Census Bureau State Data Center Program based in part on his own experiences in Missouri. Glimpse also served as associate director of the U.S. Office of Federal Statistical Policy and Standards focusing on integrated data access and use.

Operating since the 1980s, Glimpse is founder and principal of ProximityOne, a business, based in Alexandria, Virginia. ProximityOne develops, deploys, and uses decision-making information resources to help clients better formulate, manage, and assess strategy and operations. They implement decision-making information solutions to achieve order-of-magnitude performance improvements, set new performance standards and reshape opportunities. ProximityOne operates specialized programs focused on developing, accessing, and using geodemographics.

See more about ProximityOne -- <http://proximityone.com>

... and Warren Glimpse -- <http://proximityone.com/aboutwg.htm>